

DEEP SPACE SPARKLE



HOME
TO
HOME



Time Needed: 1 session @ 30 minutes

HEALTH WORKER HERO

PROPORTION

HEALTH WORKER HERO



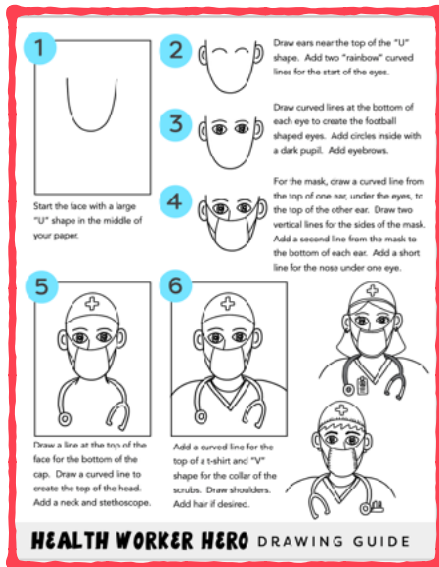
* Today I will learn about **PROPORTION** so that I **CAN** draw a person using accurate proportions.

* **NCAS: CONNECTING**
Anchor Standard #10:
Synthesize and relate
knowledge and personal
experiences to make art.

WHAT YOU'LL NEED:

- Drawing paper
- Drawing utensil
- Coloring materials, such as colored pencils

PROPORTION:
Creating parts of an
artwork that relate well
together as a whole.



DRAWING THE HEALTH WORKER HERO

While creating this health worker hero portrait, think about **PROPORTION**. In a portrait, proportion is when all the features of the face and size of the head and body relate well to one another.

Start by drawing a "U" shape in the center of your paper. Add ears near the top of the sides of the "U". Draw eyes in the upper part of the "U". Later, you will add the top of the head and the eyes will end up being in the center of the face. Draw a mask under the eyes that has straps that reach to the ears. Add a line for the nose. Draw a large "rainbow" for the top of the head.

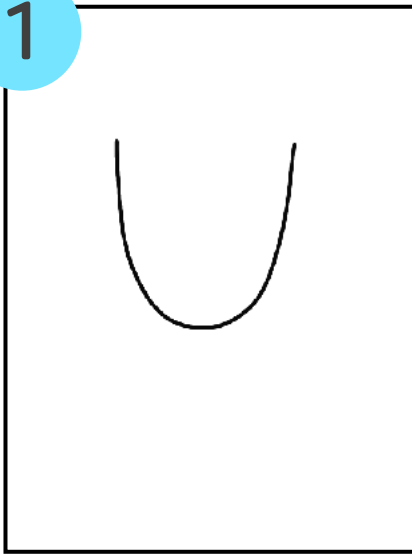
Draw a neck and stethoscope. It's important to draw the stethoscope first so that it overlaps the shirt. Add shoulders. Draw the collar for the scrubs. Add hair if desired. You can finish off your drawing by creating a background.

OPTIONAL COLORING TECHNIQUE

Use colored pencils to **LAYER** colors on top of each other. Layering colors can create **VALUES** and add a **3-DIMENSIONAL** quality to your artwork. Try coloring an area with a light colored pencil and then indicating shadows by layering parts of that area with a darker colored pencil. Shadowed areas on a portrait are the edges of the face, around the eyes and the neck.



1



Start the face with a large "U" shape in the middle of your paper.

2



Draw ears near the top of the "U" shape. Add two "rainbow" curved lines for the start of the eyes.

3



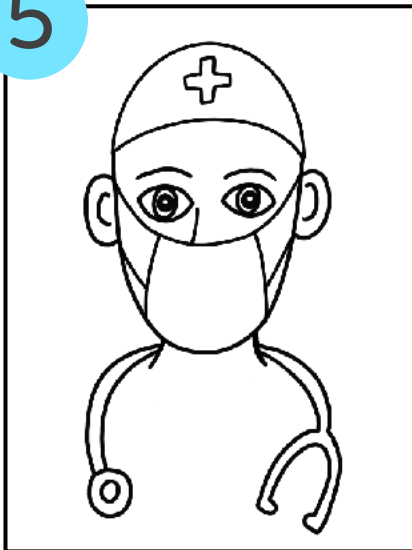
Draw curved lines at the bottom of each eye to create the football shaped eyes. Add circles inside with a dark pupil. Add eyebrows.

4



For the mask, draw a curved line from the top of one ear, under the eyes, to the top of the other ear. Draw two vertical lines for the sides of the mask. Add a second line from the mask to the bottom of each ear. Add a short line for the nose under one eye.

5



Draw a line at the top of the face for the bottom of the cap. Draw a curved line to create the top of the head. Add a neck and stethoscope.

6



Add a curved line for the top of a t-shirt and "V" shape for the collar of the scrubs. Draw shoulders. Add hair if desired.



HEALTH WORKER HERO DRAWING GUIDE



HOME TO HOME